

For Lease - Manufacturing Facility

580 Tiff Street Buffalo, New York

Vacant - Build to Suit

Light/Heavy Industrial

6.63 acres

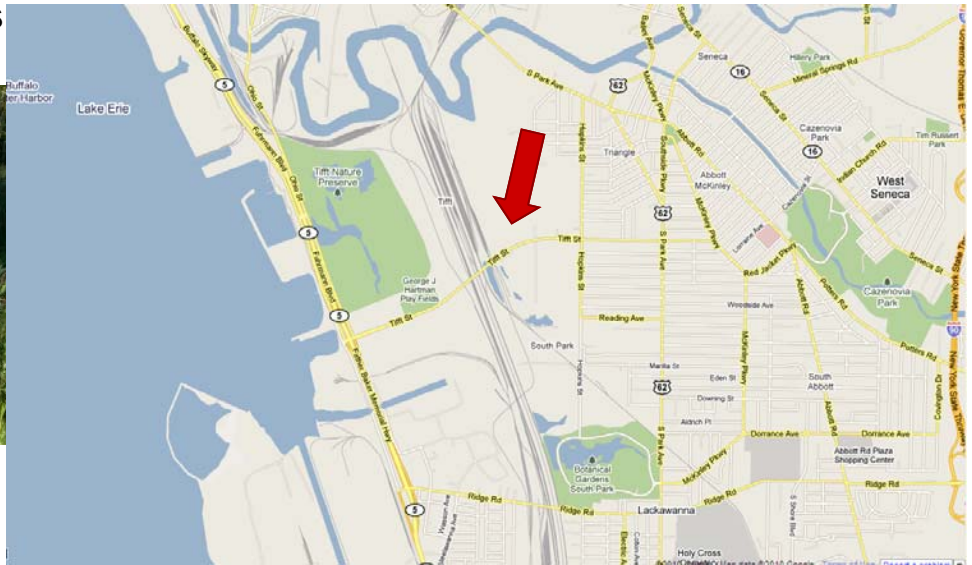
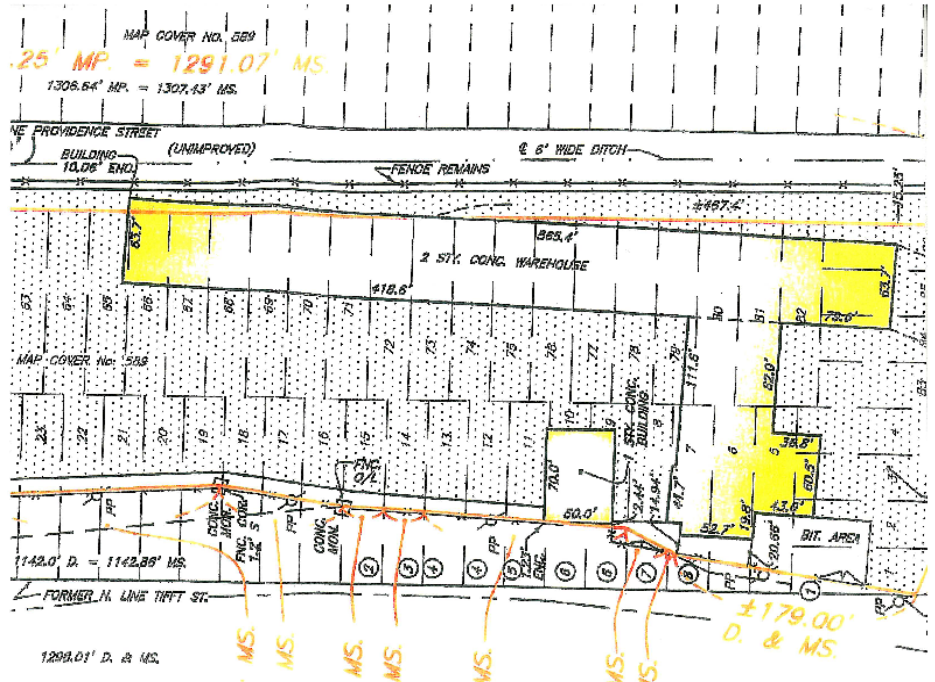
54,000 square feet

60' Clear Span

25' Clear Height

480 Volts / 500 KVA

5 Ton Crane Capacities



4 Centre Drive
Orchard Park, NY
Phone: 716-667-1234
Fax: 716-667-1258

Leasing Agent: Peter Krog II

pkrog2@krogcorp.com