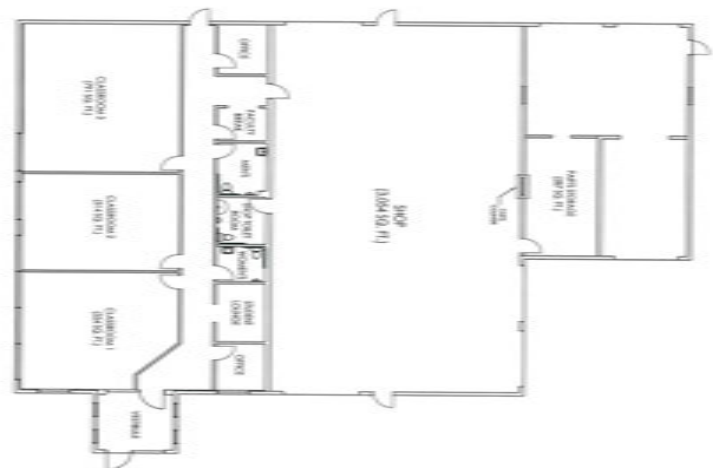


For Lease - Office / Light Manufacturing

45 Maple Street Dansville, New York

- Vacant - Build to Suit
- 8,500 square feet
- Manufacturing, Light Industrial
- Energy Efficient
- Large Electrical Service Capacities
- Former Automobile Dealership
- 14' Clear Ceiling Height
- Overhead Grade Doors
- Lots of Paved Parking
- Less than 1/2 mile from I 390



The Krog Corp.

4 Centre Drive
Orchard Park, NY
Phone: 716-667-1234
Fax: 716-667-1258

Leasing Agent: Peter Krog II

plkrog2@krogcorp.com